



Introducing...

The Better Beading Tool 2.0

from **Busch**[®]
(Patent pending)

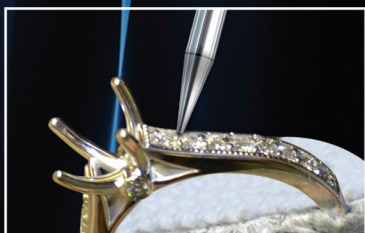
Busch BT 06



A circumferential filigree edge ensures precision beading, significantly reducing the possibility of damage to stones.



The high-gloss calotte or cavity produces a perfectly round, highly polished bead.



Beads can be positioned and shaped effortlessly.

When it comes to fine jewelry, the quality is in the details, and no one understands that better than Busch.

We also understand that jewelry-making is an art in which esthetics are as important as function, and that there is no substitute for quality when it comes to a Jeweler's tools.

For additional information, or the name of your nearest dealer, contact:

Pfingst
& Company, Inc.

105 Snyder Road, South Plainfield, New Jersey 07080
Phone: 908-561-6400 • Fax: 908-561-3213 • E-mail: pfingst.co@rcn.com

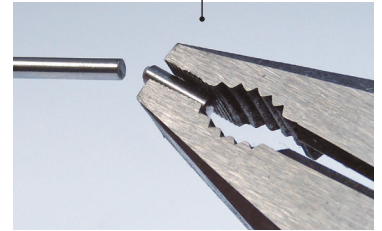
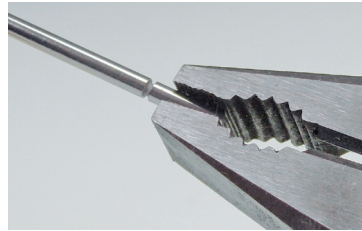


There is no substitute for quality



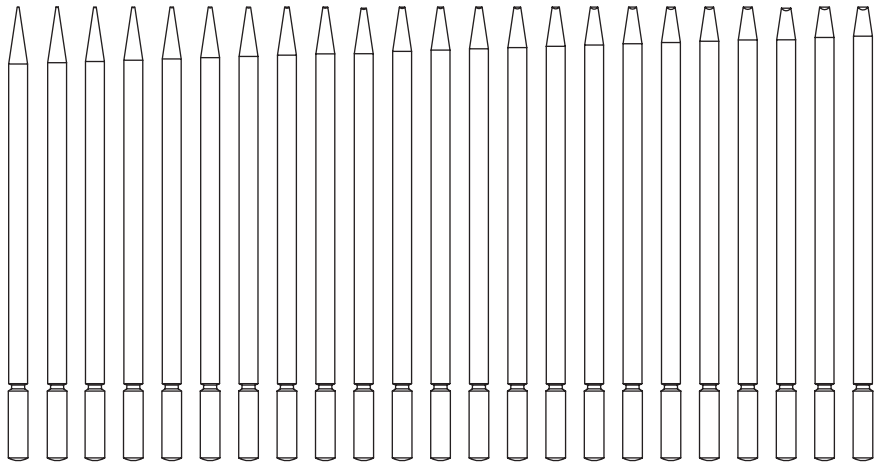
The Busch logo is your assurance of quality.

Size is clearly marked on each Beading Tool.



The shank length can be easily adjusted for better ergonomics.

Shank: 2,6 mm ■ Total length: 60 mm ■ Shortened length: 50 mm



The absolute best tool for securing your precious diamonds and gemstones.

BT	00	01	02	03	04	05	06	07	08	09	10	11	12	13	14	15	16	17	18	19	20	21	22
ø 1/100 mm	25	30	35	40	45	50	55	60	65	70	75	80	85	90	95	100	105	110	115	120	125	130	135

Packaging unit: 100 pieces per box



For additional information, or the name of your nearest dealer, contact:

Pfingst
& Company, Inc.

105 Snyder Road, South Plainfield, New Jersey 07080

Phone: 908-561-6400 • Fax: 908-561-3213 • E-mail: pfingst.co@rcn.com

Busch® is a registered trademark of Pfingst & Company